



**GRENOBLE
ECOLE DE
MANAGEMENT**

BUSINESS LAB FOR SOCIETY

MBA

PART-TIME

MOSCOW



The Grenoble Ecole de Management is an intensive MBA program with a focus on the challenges of management and key operational concepts.

Moscow MBA campus provides a **Double degree program** with a team of international professors and 3 intensive weeks of **specializations in Europe**. Upon graduation, you will receive an MBA from the Grenoble Ecole de Management and have the opportunity to earn the Russian State Diploma, Master's in Management (RANEPa). The weekend part-time format also allows professionals to work while completing their degree.

Our Mission: To provide future managers with the core knowledge needed to adopt a **holistic view of business** and stimulate managerial and entrepreneurial initiative. We seek to enhance career progression and enable participants to think critically and strategically in order to adapt to the changing global environment.

GEM Ranked

6th

In France
Le Point 2019 Ranking

25th

In Europe
In the Financial Times
European Business
Schools 2019 Ranking

62th

In the World
Part-time MBA Financial
Times 2019 Ranking

DURATION

- ▶ 19 months part-time
- ▶ 8 months - Final Management Project

START DATE

October 23, 2020

TUITION FEES

15 450 Euro + 275 000 Rub

8 SPECIALIZATIONS

In Grenoble, Paris or Berlin

LOCATION

Moscow
Russia

WEEKEND FORMAT

LANGUAGE

- ▶ 75% English
- ▶ 25% Russian

2 DIPLOMAS

- ▶ MBA International (France)
- ▶ Master's in Management (Russia)



Специальные условия
оплаты для финалистов
и победителей конкурса
Лидеры России



PROGRAM*

YEAR 1

INTRODUCTION SESSION

- ▶ Intercultural Management
- ▶ Accounting & Auditing
- ▶ International Marketing
- ▶ Quantitative Methods
- ▶ Microeconomics for Managers
- ▶ Innovation Management
- ▶ Managerial Accounting
- ▶ Leadership
- ▶ Corporate Finance
- ▶ Global Business & Macroeconomics
- ▶ Digital Transformation
- ▶ Strategic Management
- ▶ Operations Management
- ▶ Research Methodology

YEAR 2

- ▶ Strategic Human Research Management
- ▶ Organisations & Change Management
- ▶ Sustainability and CSR
- ▶ Business Law
- ▶ International Negotiations
- ▶ Geopolitics
- ▶ Risk Management
- ▶ MBA NETWORKING WEEK in Grenoble
- ▶ SPECIALIZATIONS IN GRENOBLE WEEK 1
- ▶ SPECIALIZATIONS IN GRENOBLE WEEK 2
- ▶ SPECIALIZATIONS IN GRENOBLE WEEK 3

FINAL MANAGEMENT PROJECT

The second year of the program is dedicated to the Final Management Project conducted under the supervision of a tutor. Students are encouraged to choose a subject linked to their future career.

*Program content subject to change

IN THEIR OWN WORDS



«This is a truly break-through program - relevant theory mixed with extensive practice allowed to gain new skills and knowledge on the most up-to-date management topics. Brilliant professors and colleagues made this adventure astonishing through extensive collaboration and experience exchange.»

NIKOLAY ULOGA
TSYS, Project Manager



«I believe that GEM program is a reasonable time investment with a very good for Russian market value for money ratio. It definitely equips you with modern business tools and capabilities, gives you a multi-dimensional business understanding. The rest is up to you - where and how you apply it.»

ARTEM DARBINYAN
Ericsson, Business Consultant



«Thinking about my past MBA experience I should admit that it was a really great period of my life full of communication with professionals among whom were not only our school tutors but my group mates as well. The whole atmosphere of knowledge and experience sharing is a unique combination which is a necessary stage for every modern highly professional and competitive manager. Moreover I'm strongly convinced that it is an essential career stage to open yourself to the new possibilities.»

SVETLANA POPOVA
KANTAR, Associate Director Insights Division

8 SPECIALIZATIONS

Choice of one specialization composed of 3 one-week sessions*
¹Grenoble Campus | ²Berlin Campus | ³Paris Campus

ENTREPRENEURSHIP ¹

FINANCE & DIGITAL BANKING ¹

PROJECT MANAGEMENT ²

MANAGEMENT CONSULTING ¹

INTERNATIONAL BUSINESS DEVELOPMENT ¹

LUXURY BRAND MANAGEMENT ³

DIGITAL MARKETING ³

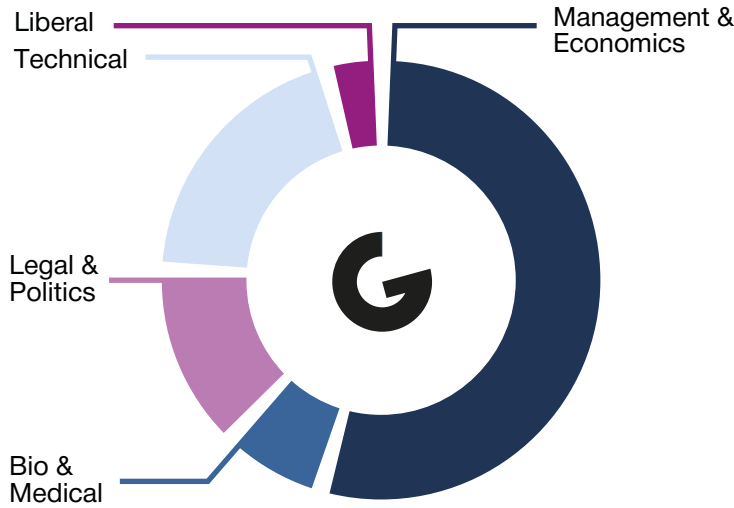
SMART & SUSTAINABLE BUSINESS ¹

* Specializations require a minimum number of participants.

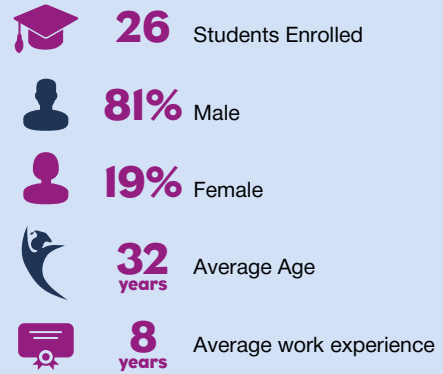


CLASS PROFILE

STUDENTS BACKGROUND



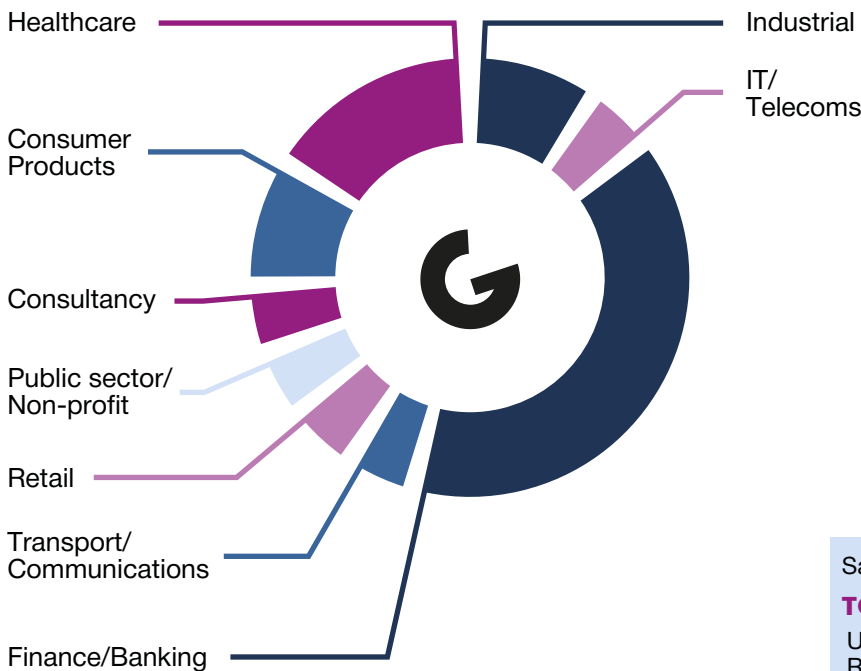
MARCH 2019 INTAKE



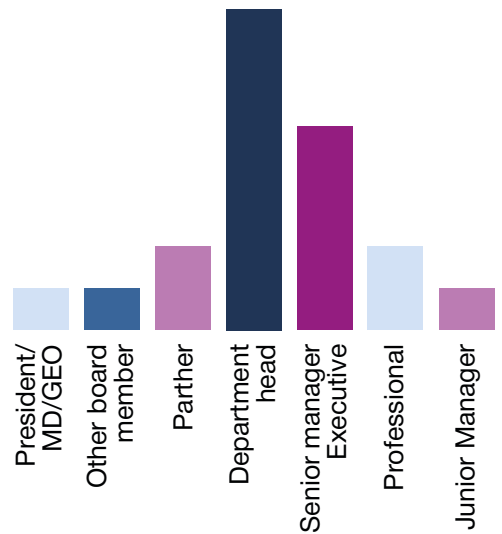
CAREER STATS

BASED ON 2016 GRADUATES WHO WERE INTERVIEWED FOR THE FINANCIAL TIMES MBA RANKING

SECTOR OF EMPLOYMENT THREE YEARS AFTER GRADUATION (PER CENT)



ALUMNI JOB TITLES THREE YEARS AFTER GRADUATION (PER CENT)



Salary today (US\$) - 145,060

TOP EMPLOYERS:

UniCredit Bank • Philipp Morris • LUKOIL-Trans Rosbank • Pfizer • Hewlett-Packard • Kaspersky Lab VTB24 • Renaissance Cons • TNS Russia • Auchan Biocodex SA Paris • Russia Today • Boeing Russia Sanofi • Sberbank • PSB AM Cyprus



«If you are looking to take your career to the next level or to work in a competitive international setting, our MBA aims to provide you with the skills, knowledge and network to make this happen. I look forward to welcoming you on the program!»

● **PHIL EYRE, MBA Program Director**

ADMISSIONS

PRE-REQUISITES

MBA candidates are motivated career-builders with at least 3 years of professional experience and an undergraduate degree from any internationally recognized university.

APPLICANT PROFILE

Applicants should display a high level of maturity and intellectual curiosity. In addition, they should have the ability to study with confidence in English, have excellent written and oral communication skills and should be open to cultural diversity. Special attention will be paid to an applicant's motivation for an international career.

APPLICATION PROCESS

Admissions are rolling, though **we strongly encourage early application** as programs are open to a limited number of students.

From the moment you submit an application you will receive a response within 2-3 weeks.

CHECKLIST

- Bachelor, Master, Specialist undergraduate degree in any subject with good grade average
- Upper-Intermediate English level:
 - TOEFL (Internet (IBT) 94 / computer based 240 / paper based: 587 (TOEFL Institution code: 8973)
 - IELTS (6.5 with a minimum mark of 6.0 in all areas - listening, reading, writing and speaking)
 - Cambridge Proficiency Exam: C 1, C 2
 - Pearson Test of English (PTE): minimum 63
 - IBS English language certificate
- 3 motivational essays
- 2 professional references
- Administrative documents (degree certificates, CV, passport)

Please consult our website for full admissions criteria.

APPLY NOW:

<https://ggsb.fullfabric.com/>

Feel free to contact us with any questions:
grenoble_mba@ibs-m.ru Russian campus

GEM QUICK FACTS



Triple-accredited: Among the top **1%** of business schools worldwide holding this distinction



International faculty comprising reputable academics and leading corporate professionals



Vast network of more than **25,000** alumni holding positions of responsibility



Специальные условия оплаты для финалистов конкурса Лидеры России



**GRENOBLE
ECOLE DE
MANAGEMENT**
BUSINESS LAB FOR SOCIETY

Russia

Prechistenskaya nab. 11/2
401 office
119034 Moscow
+7 903 788 57 87
+7 499 403 10 49

France

Grenoble Ecole de Management
12, rue Pierre Sépard
38000 Grenoble
Tél. : +33 4 76 70 60 60
Fax : +33 4 76 70 60 99

grenoble_mba@ibs-m.ru
www.grenoble.ranepa.ru

